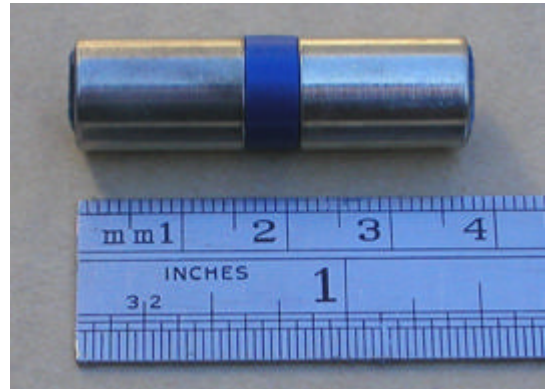




FUSETECH 240 DATA SHEET

FUSETECH 240 (FT 240) is designed for the specific protection of electronic equipment from transient voltages. These voltages could cause malfunction of your equipment or failure. It is used in applications where operational function and economics are critical.



APPLICATION

Main and branch service panels and at individual equipment locations. Protection for UPS, computer, telecommunication and radar systems, etc.

OPERATION AND TECHNOLOGY

The FT 240 provides protection by reducing the transient voltage to a level below your equipment's malfunction or failure point. This function allows for continuous operation. It does this while dissipating the surge current. If the surge current exceeds the rating of the FT 240 device, it will short-circuit the line, protecting your equipment and clear an upstream fuse or circuit-breaker. The FT 240 response time to the transient is in the nano-second region. Silicon suppressor technology is used, which provides high performance capability and long life. It performs this function much like a zener diode.

INSTALLATION

The FT 240 is applied in parallel with the load from line to neutral based on power system voltage. It can be installed on a circuit board, or in a special designed assembly that is DIN rail mounted.

SPECIFICATION (IEC 61643-11-A2/ EN 61643-11 A)

- 1) Model Number: _____ FT 240
- 2) Nominal system voltage (Uo): _____ 240 Vrms
- 3) Maximum Continuous Operating Voltage (Uc): _____ 255 Vrms
- 4) Test Class II -- Nominal Discharge Currents (In): _____ 5 kA
- 5) Voltage Protection Level (Up): _____ 750 V
- 6) Temperature range : _____ -5° C to 40° C
- 7) Overcurrent protection requirement: _____ As required of application
- 8) Physical Dimensions: _____ 11mm dia. x 38 mm long

